



NEVER JUST STAY. STAY INSPIRED.

CONRAD®
WASHINGTON DC

WELCOME TO CONRAD WASHINGTON, DC



Rising ten floors above the intersection of New York Avenue and 10th Street, NW, the Conrad Washington, DC brings Washington hospitality into a new era of modern luxury with its design, culinary and retail offerings.

A sophisticated addition to the city's most exciting mixed-use development, CityCenterDC, Conrad brings a contemporary milieu to a neighborhood already bolstered by its close proximity to the Walter E. Washington Convention Center, Capital One Arena, award-winning restaurants and every major metro line by way of two main stations: Metro Center and Gallery Place.

CITYCENTERDC

The Conrad Washington, DC sits adjacent to CityCenterDC, a landmark 10-acre mixed-use development situated at the heart of DC's new business district. Presenting more than thirty (30) world-class designer shops and boutiques, as well as some of the city's best known and critically acclaimed restaurants, CityCenterDC is a destination for both out-of-town guests and local Washingtonians. For more information, please visit CityCenterDC.com.

INVENTIVE DINING AND ENTERTAINING

- **Estuary** – Conrad Washington, DC's signature restaurant, Estuary, by James Beard Award and Top Chef finalists, Bryan and Michael Voltaggio, complements the hotel's upscale offerings. The Voltaggiros' heartfelt appreciation for their Maryland roots is the catalyst for this elevated dining experience featuring the flavors of the Chesapeake. Estuary serves breakfast, lunch, dinner, and weekend brunch.
- **Summit the Rooftop at Conrad** – This exclusive outdoor seasonal venue offers panoramic views of some of DC's most famous landmarks. A stylish destination for both locals and hotel guests serving exceptional cocktails, fine wines, and small bites, the elevated experience features three (3) distinct sections: a spirited bar scene, an intimate lounge, and an Event Terrace exclusively for groups.
- **Estuary Bar** – Vibrant, dramatic and comfortably inviting, Estuary Bar is a perfect venue to recount the activities of the day over artfully prepared beverages and delicious bites from the Estuary menu. Enjoy sweeping views of The Park at CityCenterDC while relaxing next to a cozy fireplace or outdoors on the meticulously landscaped North Terrace.

AMENITIES

- **Sakura Club** - Unique to Conrad Washington, DC is the Sakura Club, a serene private club on the 10th floor. Sakura Club guests have access to a premium experience with offerings such as a sophisticated made-to-order menu throughout the day and an exquisite Japanese whiskey collection. The exclusive, full-service environment is hosted by a dedicated group of Team Members whose curated service creates a personalized experience unlike any other in the city.
- **Conrad Concierge Services**
- **Fitness Center**
- **Valet Parking**
- **Business Center**



THE ESSENCE OF CONRAD HOTELS & RESORTS

When sophisticated design, intuitive service, and smart luxury converge, the result is inspiration. From personalized one-of-a-kind locally-inspired experiences to cutting edge technology that enables us to anticipate guest needs and exceed expectations, Conrad Hotels & Resorts offers guests the opportunity to experience style and service on their own terms and connect with the world.

LUXURY ACCOMMODATIONS

- 360 luxuriously appointed rooms and 32 suites, all with floor-to-ceiling windows
- Presidential, Diplomat, Avenue Suites (one each), and six (6) Park View Suites
- 55" HDTVs
- Waterworks Rain Shower Heads
- State-of-the-art in-room technology
- Elevated in-room coffee service
- Remote guest check-in through the Hilton Honors app
- In-room safe
- Shanghai Tang amenities

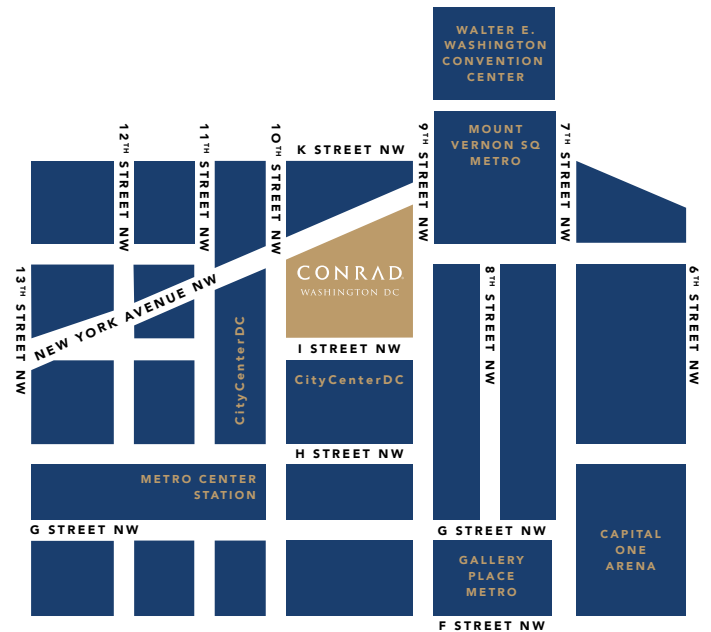
ROOM TYPES

- | | |
|-----------------------|---------------------|
| ▪ Deluxe King | 416-471 square feet |
| ▪ Deluxe Double Queen | 465-471 square feet |
| ▪ Corner Premier King | 459-611 square feet |
| ▪ Studio Suite | 628-800 square feet |
| ▪ Park View Suite | 926 square feet |
| ▪ Avenue Suite | 1,231 square feet |
| ▪ Diplomat Suite | 1,396 square feet |
| ▪ Presidential Suite | 2,405 square feet |
-
- Forty-two (42) Sakura Club rooms and twelve (12) Sakura Club suites
 - Park View, Diplomat, and Presidential Suites feature gas fireplaces
 - 75% King Accommodations,
 - 25% Double Accommodations



AN IDEAL LOCATION

- Two (2) blocks from the Walter E. Washington Convention Center
- Two (2) blocks from two major stations in the DC transit system: Metro Center and Gallery Place-Chinatown
- 9 minutes (1.3 miles) from Union Station
- 14 minutes (4.5 miles) from Reagan National Airport
- 41 minutes (27.5 miles) from Dulles International Airport
- 47 minutes (30.7 miles) from Baltimore / Washington International Airport



EXPLORE

- CityCenterDC
- Smithsonian Museums
- White House
- Washington Monument, Jefferson / Lincoln / Vietnam Memorials
- Ford's Theatre
- Holocaust Museum
- Arlington Cemetery
- National Archives
- U.S. Capitol
- International Spy Museum
- Renwick Gallery
- Georgetown

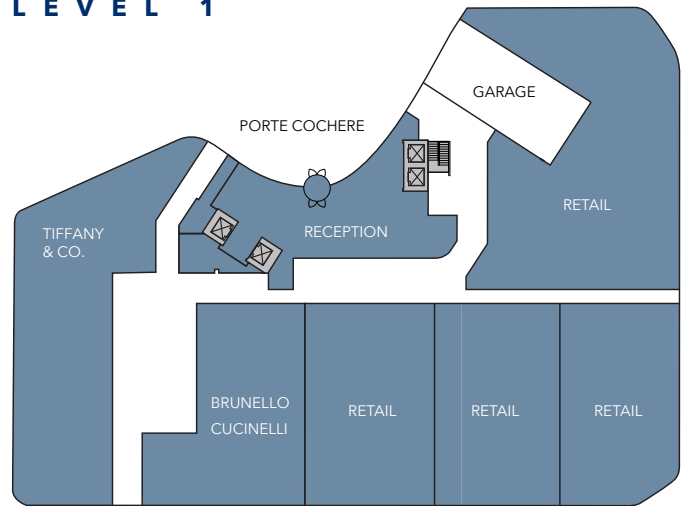
MEETINGS AND EVENTS

The Conrad Washington, DC's 32,000 square feet of meeting and event space mirrors the technological innovations and smart luxury that define Conrad Hotels & Resorts.

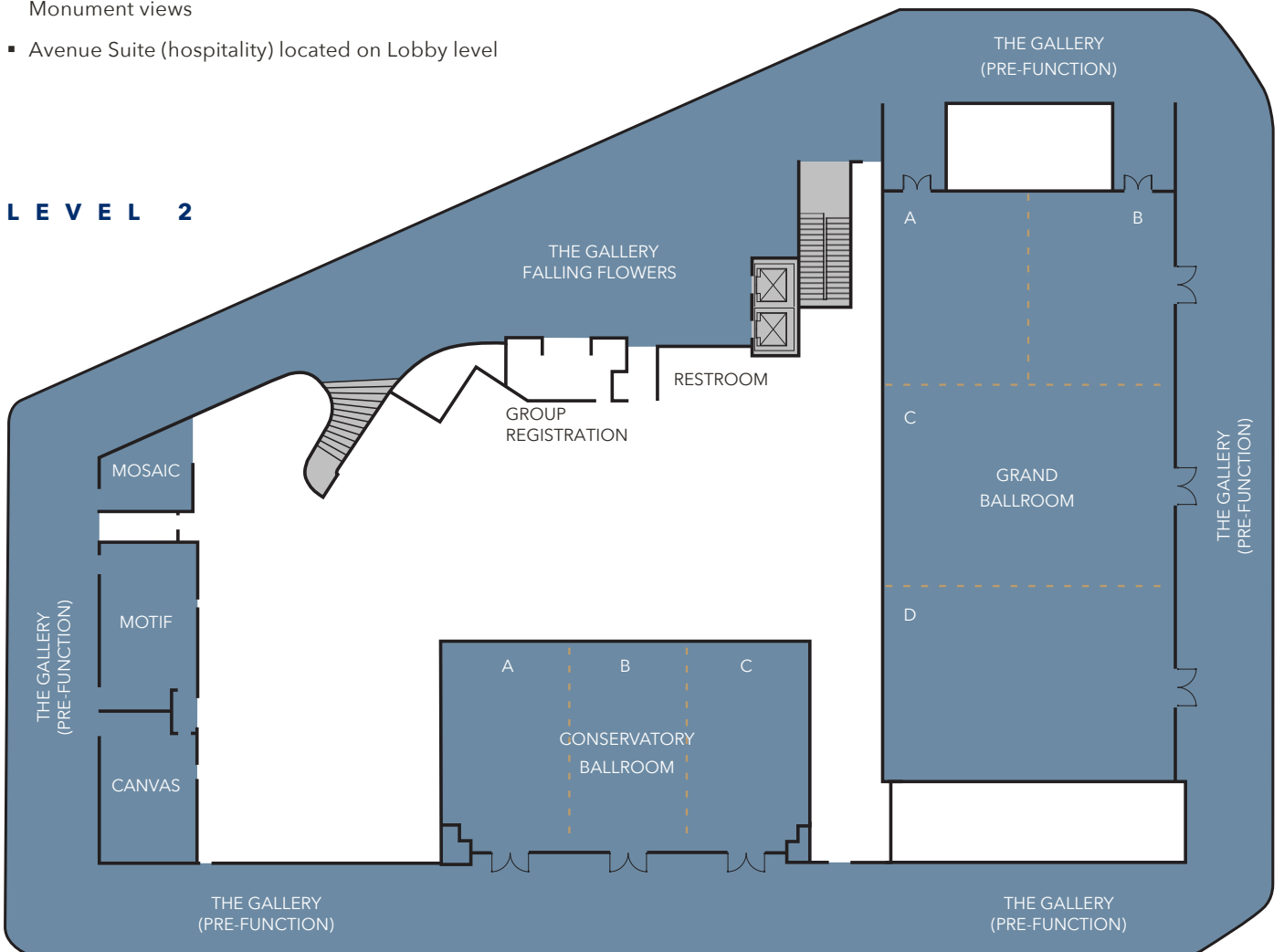
As the only luxury hotel in Washington, D.C. with 100% of its meeting space above street level, the two Ballrooms and Executive Conference Rooms all feature floor-to-ceiling windows. The unique design accentuates a dynamic play of light and reflection from the expanse of windows. There is no better way to keep attendees energized and engaged while enhancing productivity.

- Grand Ballroom - 7,626 square feet
- Conservatory Ballroom - 3,300 square feet
- The Gallery - 19,000 square feet of pre-function space
- The Arts Rooms - Three (3) Conference Rooms (Mosaic, Motif and Canvas) - 1,005 square feet
- Dedicated Registration / Group Office
- The Veil and Terrace Executive Board of Directors Rooms with pantry and direct outdoor terrace access accommodate twelve (12) and fourteen (14) guests, respectively
- Multiple outdoor venue options including two (2) lushly landscaped, accessible terraces on the Lobby level and a rooftop Event Terrace with spectacular Capitol and Monument views
- Avenue Suite (hospitality) located on Lobby level

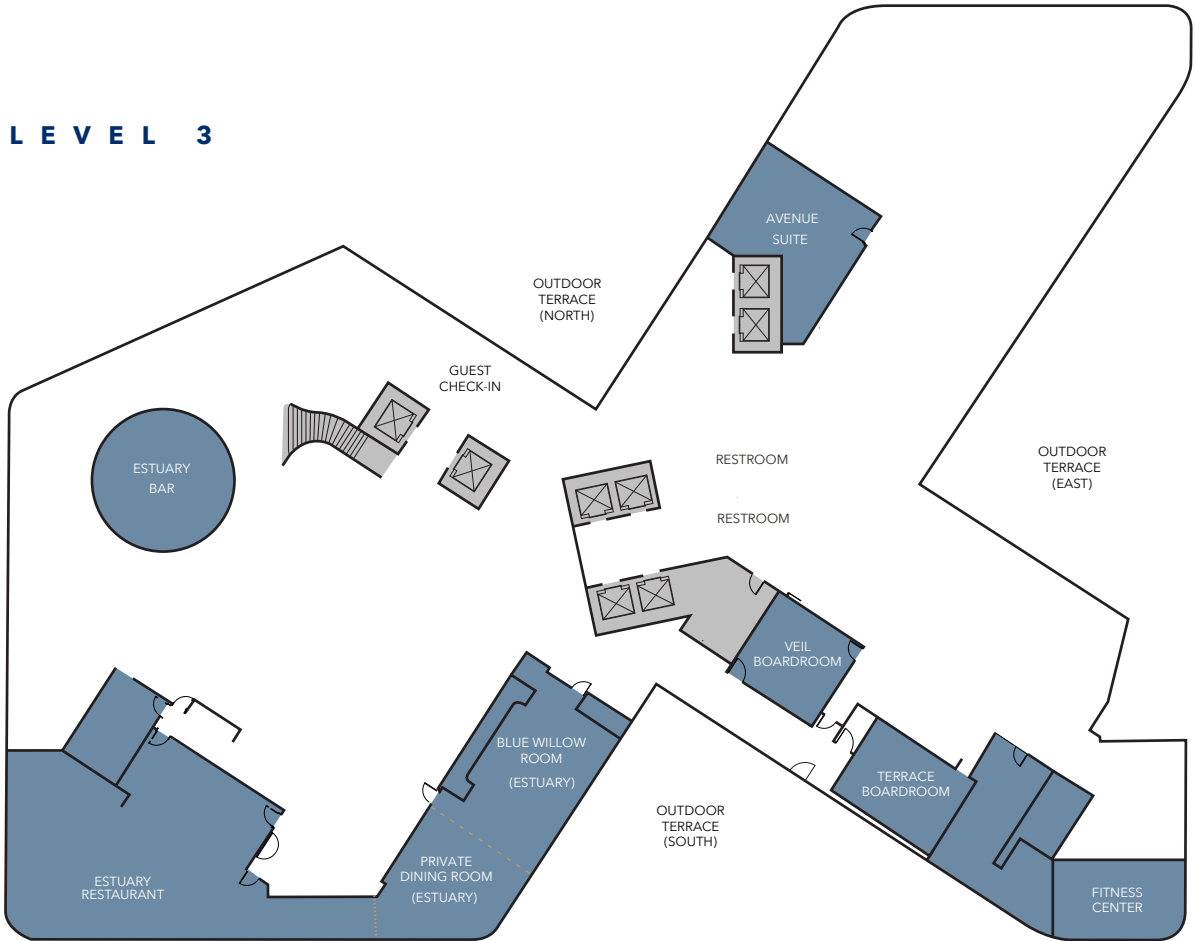
LEVEL 1



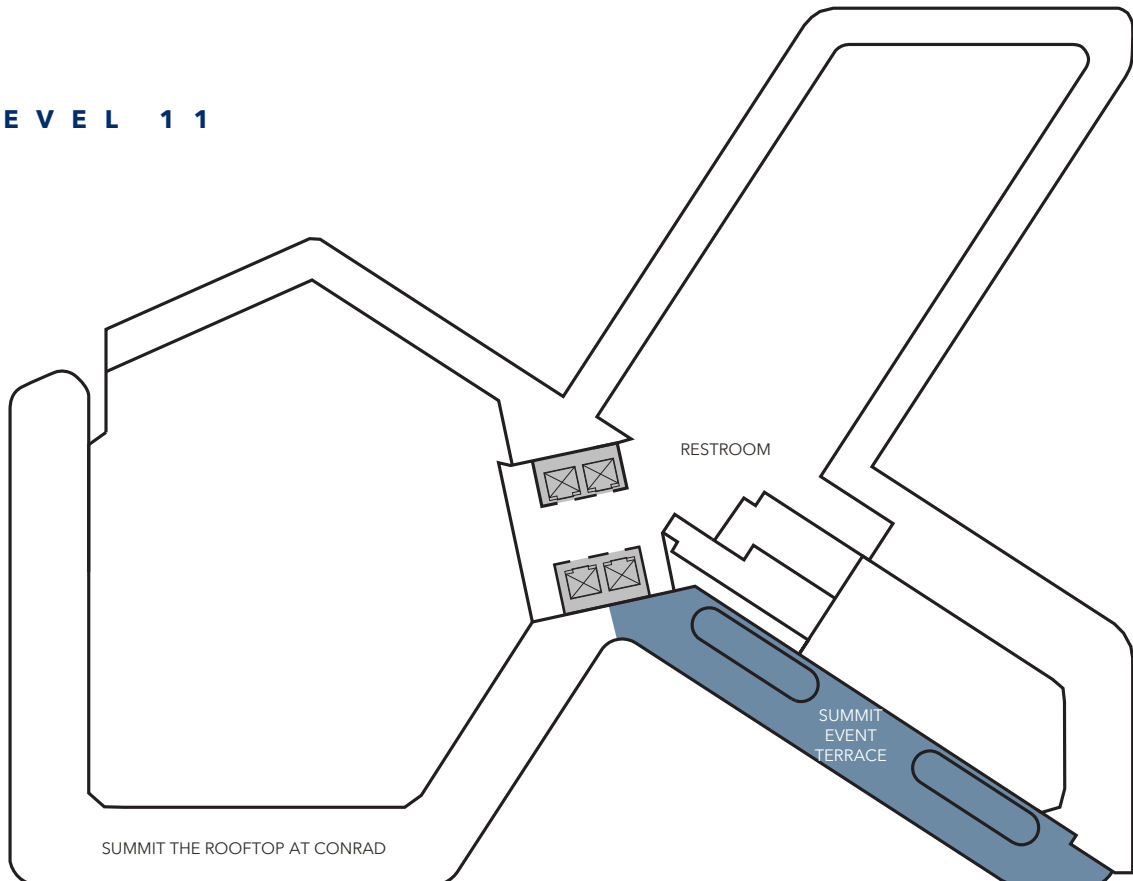
LEVEL 2



LEVEL 3



LEVEL 11



MEETING AND EVENT CAPACITY CHART

Function Room	Dimensions	Square Feet	Ceiling Height	Classroom	Theater	Rounds (10)	Rounds (7)	Hollow Square	U-Shape	Conference	Reception
LEVEL 2											
Ballrooms											
Grand Ballroom	62' x 123'	7,626	17'	462	850	500	350	150	126	106	720
Grand Ballroom A	31' x 40'	1,240	17'	60	132	70	49	44	36	30	120
Grand Ballroom B	31' x 40'	1,240	17'	60	132	70	49	44	36	30	120
Grand Ballroom C	62' x 42'	2,604	17'	132	280	150	105	78	62	48	250
Grand Ballroom D	62' x 41'	2,542	17'	132	280	150	105	78	62	48	250
Grand Ballroom A/B	62' x 40'	2,480	17'	132	280	140	98	78	60	48	240
Grand Ballroom C/D	62' x 83'	5,146	17'	264	570	300	210	114	90	72	500
Conservatory Ballroom	75' x 44'	3,300	17'	230	324	210	147	90	75	66	320
Conservatory Ballroom A	25' x 44'	1,100	17'	54	80	60	42	42	36	30	105
Conservatory Ballroom B	25' x 44'	1,100	17'	54	80	60	42	42	36	30	105
Conservatory Ballroom C	25' x 44'	1,100	17'	54	80	60	42	42	36	30	105
Conservatory Ballroom A/B	50' x 44'	2,200	17'	120	160	120	84	66	48	42	220
Conservatory Ballroom B/C	50' x 44'	2,200	17'	120	160	120	84	66	48	42	220
The Arts Rooms											
Mosaic	19' x 15'	285	9'	N/A	N/A	N/A	N/A	N/A	N/A	8	N/A
Motif	15' x 25'	375	9'	N/A	N/A	N/A	N/A	N/A	N/A	24	N/A
Canvas	15' x 23'	345	9'	N/A	N/A	N/A	N/A	N/A	N/A	18	N/A
Pre-Function											
The Gallery	N/A	19,000	17'	N/A	N/A	N/A	N/A	N/A	N/A	N/A	1250
LEVEL 3											
Veil Boardroom	21' x 20'	420	12'	N/A	N/A	N/A	N/A	N/A	N/A	10	N/A
Terrace Boardroom	30' x 19'	570	12'	N/A	N/A	N/A	N/A	N/A	N/A	14	N/A
Avenue Suite	21' x 23'	483	10'	N/A	30	20	14	10	7	10	40
LEVEL 11											
Rooftop Event Terrace (Outdoor)	110' x 18'	1,980	N/A	N/A	N/A	N/A	N/A	N/A	N/A	N/A	130



CONTACT INFORMATION

Tiffany Rioux - Director of Sales
(O) 202 844 5930 (M) 202 805 9049
Andy Finn - Director of Sales and Marketing
(O) 202 844 5900 (M) 281 979 0433

HOTEL INFORMATION

Conrad Washington, DC
950 New York Avenue, NW, Washington, DC, 20001
202-844-5900
ConradWashingtonDC.com