



*NEVER JUST STAY. STAY INSPIRED.*

CONRAD®  
WASHINGTON DC

# W E L C O M E T O C O N R A D W A S H I N G T O N , D C

**Rising ten floors above the intersection of New York Avenue and 10th Street, NW, the Conrad Washington, DC is poised to bring Washington hospitality into a new era of modern luxury with its design, culinary and retail offerings. Scheduled to open in February 2019, the luxury hotel is a stylish and sophisticated addition to the city's most exciting mixed-use development, CityCenterDC. In tandem with CityCenterDC, the Conrad will bring a contemporary milieu to a neighborhood already bolstered by its close proximity to the Walter E. Washington Convention Center, Capital One Arena, award-winning restaurants and every major metro line by way of two main stations: Metro Center and Gallery Place.**

## C I T Y C E N T E R D C

The Conrad Washington, DC sits adjacent to CityCenterDC, a landmark 10-acre, mixed-use development situated at the heart of DC's new business district. Presenting more than thirty (30) world-class designer shops and boutiques, as well as some of the city's best known and critically acclaimed restaurants, CityCenterDC is a destination for both out-of-town guests and local Washingtonians. For more information, please visit CityCenterDC at [citycenterdc.com](http://citycenterdc.com).

## A M E N I T I E S

- Unique to Conrad Washington, DC is the Sakura Club, a serene private club on the 10th floor. Sakura Club guests will have access to a premium experience with offerings such as a sophisticated made-to-order menu throughout the day, an exquisite Japanese whiskey collection, and a traditional afternoon tea ritual. The exclusive, full-service environment is hosted by a dedicated group of Team Members and offerings are curated from local vendors to create a personalized experience unlike any other in the city.
- Conrad Concierge Services
- Fitness Center
- Valet Parking
- Business Center



## I N V E N T I V E D I N I N G A N D E N T E R T A I N M E N T

- Estuary - The Conrad Washington, DC's signature restaurant, Estuary, by James Beard Award and Top Chef finalists, Bryan and Michael Voltaggio, will complement the hotel's upscale offerings. The Voltaggios' heartfelt appreciation for their Maryland roots is the catalyst for this elevated farm-to-table dining experience featuring the seafood of the Chesapeake. Estuary will serve breakfast, lunch, dinner, and weekend brunch.
- Rooftop Lounge / Event Terrace - This exclusive outdoor seasonal venue offers panoramic views of some of Washington's most famous landmarks. A relaxed respite serving exceptional cocktails, fine wines, and small bites, the elevated experience features three (3) distinct sections: a spirited bar scene, an intimate lounge, and an Event Terrace exclusively for groups, showcasing 360-degree views of the city.
- Estuary Bar - Vibrant and dramatic, yet understated and comfortable, Estuary Bar is a perfect venue to recount the activities of the day over artfully prepared beverages. Enjoy sweeping views of The Park at CityCenterDC while relaxing next to a cozy fireplace or outdoors surrounded by an elevated urban oasis on the meticulously landscaped North Terrace.



# THE ESSENCE OF CONRAD HOTELS & RESORTS

**When sophisticated design, intuitive service, and smart luxury converge, the result is inspiration. From personalized one-of-a-kind locally-inspired experiences to cutting edge technology that enables us to anticipate guest needs and exceed expectations, Conrad Hotels & Resorts offers guests the opportunity to experience style and service on their own terms and connect with the world.**

## LUXURY ACCOMMODATIONS

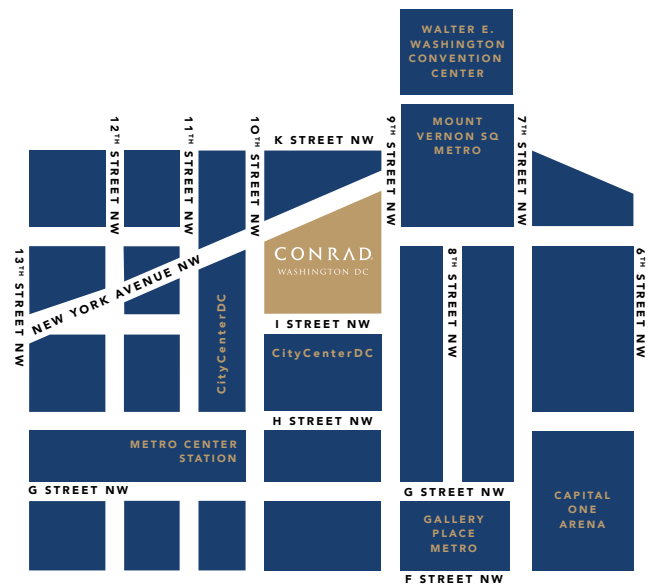
- 360 luxuriously appointed rooms and 32 suites, all with floor-to-ceiling windows
- Presidential, Diplomat, Avenue Suites (one each), and six (6) Park View Suites
- 55" HDTVs
- Waterworks Rain Shower Heads
- State-of-the-art in-room technology
- Elevated in-room coffee service
- Remote guest check-in through the Hilton Honors app
- In-room safe
- Choice of Shanghai Tang, Temple Spa, and Refinery amenities

## ROOM TYPES

- Deluxe King 416-471 square feet
- Deluxe Double 465-471 square feet
- Corner Premier King 459-611 square feet
- Studio Suite 628-800 square feet
- Park View Suite 926 square feet
- Avenue Suite 1,231 square feet
- Diplomat Suite 1,396 square feet
- Presidential Suite 2,405 square feet
- Forty-four (44) Sakura Club rooms and ten (10) Sakura Club suites
- Park View, Diplomat, and Presidential Suites feature gas fireplaces
- 75% King Accommodations, 25% Double Accommodations

## AN IDEAL LOCATION

- Two (2) blocks from the Walter E. Washington Convention Center
- Two (2) blocks from two major stations in the DC transit system: Metro Center and Gallery Place-Chinatown
- 14 minutes (4.5 miles) from Reagan National Airport
- 41 minutes (27.5 miles) from Dulles International Airport
- 9 minutes (1.3 miles) from Union Station
- 47 minutes (30.7 miles) from Baltimore / Washington International Airport



## EXPLORE

- CityCenterDC
- Smithsonian Museums
- White House
- Washington Monument, Jefferson / Lincoln / Vietnam Memorials
- Ford's Theatre
- Holocaust Museum
- Arlington Cemetery
- National Archives
- U.S. Capitol
- International Spy Museum
- Washington, D.C. Newseum
- Georgetown

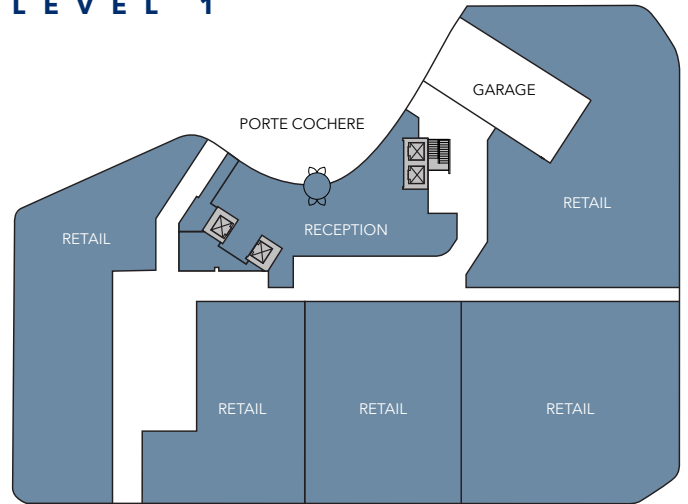
## MEETINGS AND EVENTS

The Conrad Washington, DC's 32,000 square feet of meeting and event space will mirror the technological innovations and smart luxury that define Conrad Hotels & Resorts.

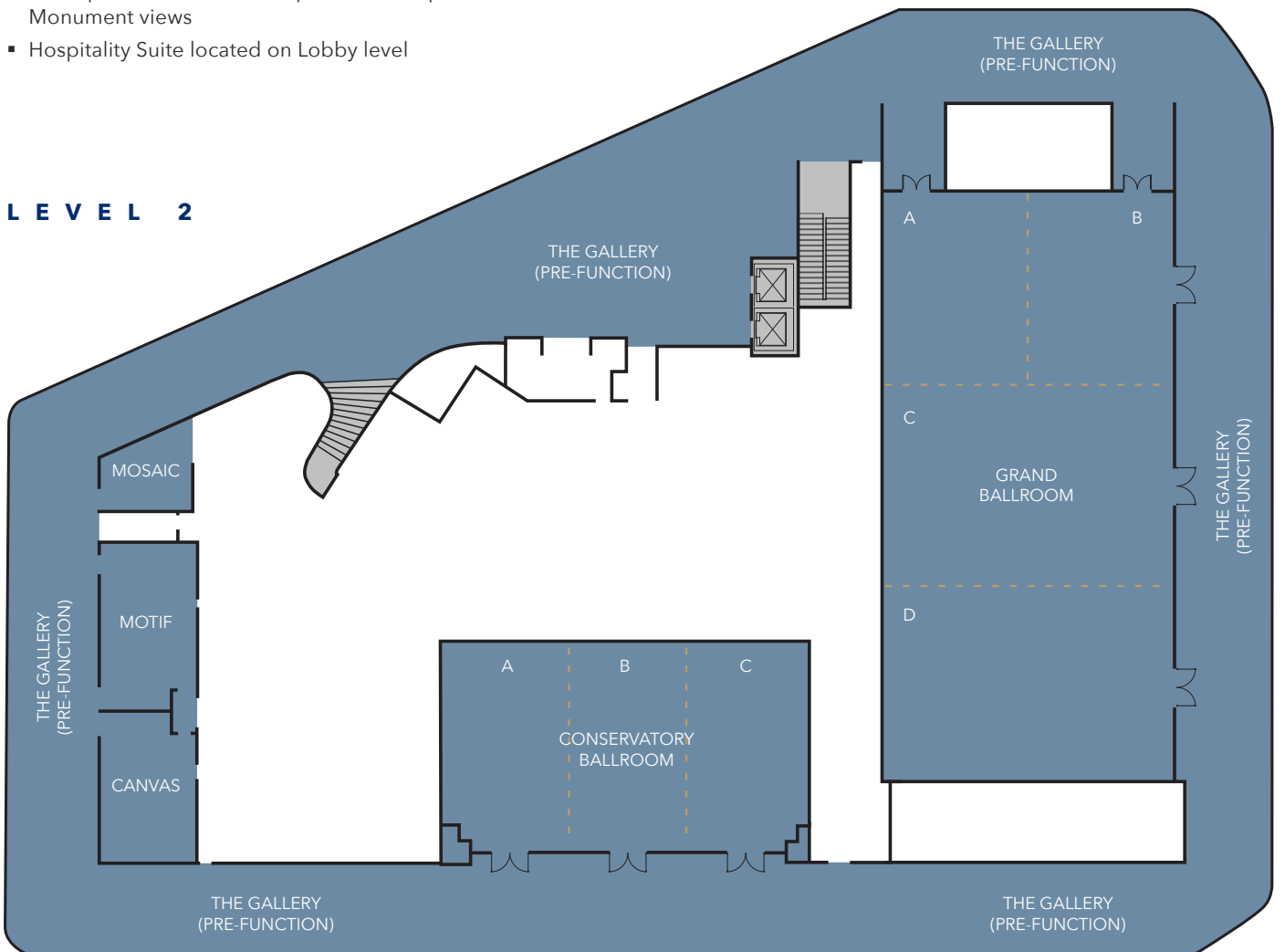
As the only luxury hotel in Washington, D.C. with 100% of its meeting space above street level, the two Ballrooms and Executive Conference Rooms all feature floor-to-ceiling windows. The unique design accentuates a dynamic play of light and reflection from the expanse of windows. There is no better way to keep attendees energized and engaged while enhancing productivity.

- Grand Ballroom - 7,626 square feet
- Conservatory Ballroom - 3,300 square feet
- The Gallery - 19,000 square feet of pre-function space
- The Arts Rooms - Three (3) Conference Rooms (Mosaic, Motif and Canvas) - 1,005 square feet
- Dedicated Registration / Group Office
- The Veil and Terrace Executive Board of Directors Rooms with connecting restrooms, pantry and direct outdoor terrace access accommodate ten (10) and sixteen (16) guests, respectively
- Multiple outdoor venue options including two (2) lushly landscaped, accessible terraces on the Lobby level and a rooftop Event Terrace with spectacular Capitol and Monument views
- Hospitality Suite located on Lobby level

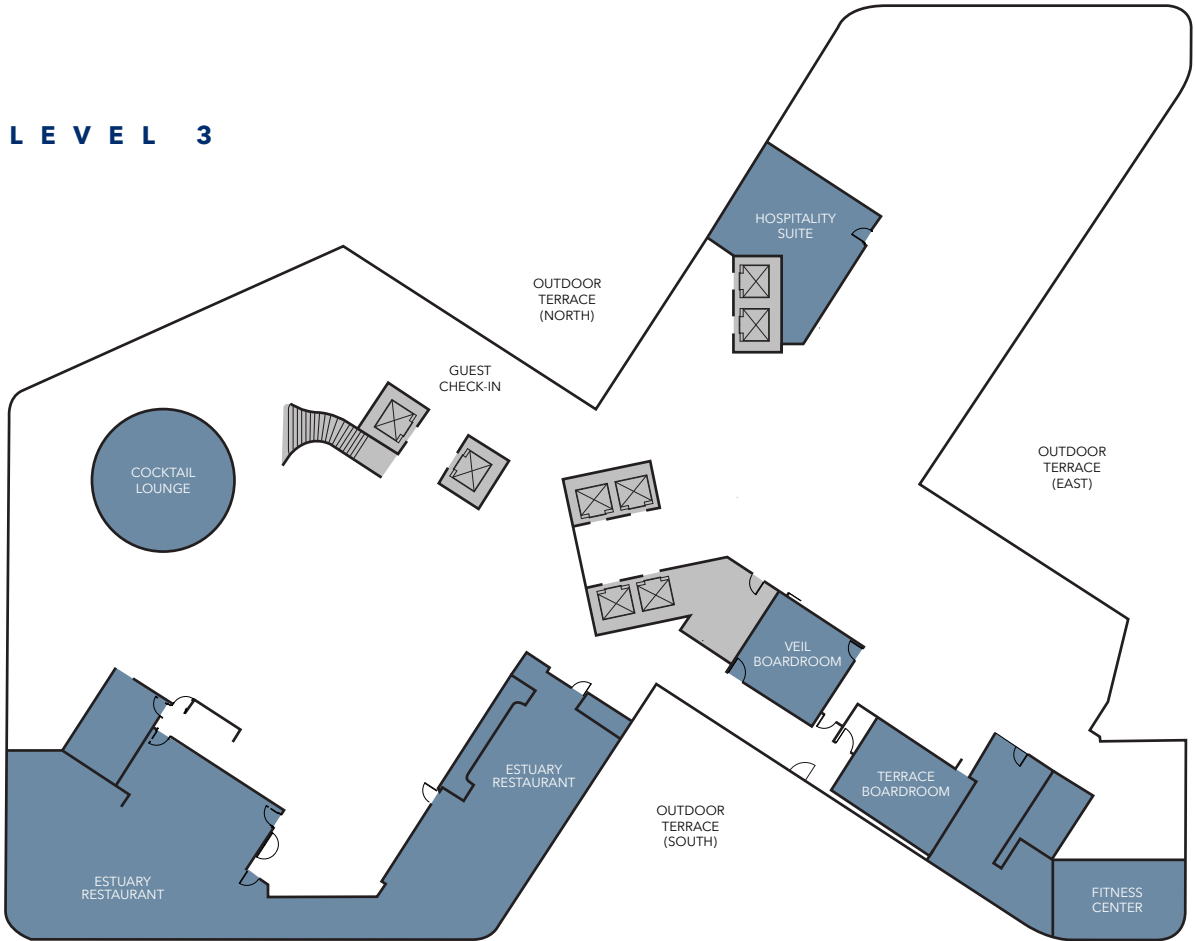
### LEVEL 1



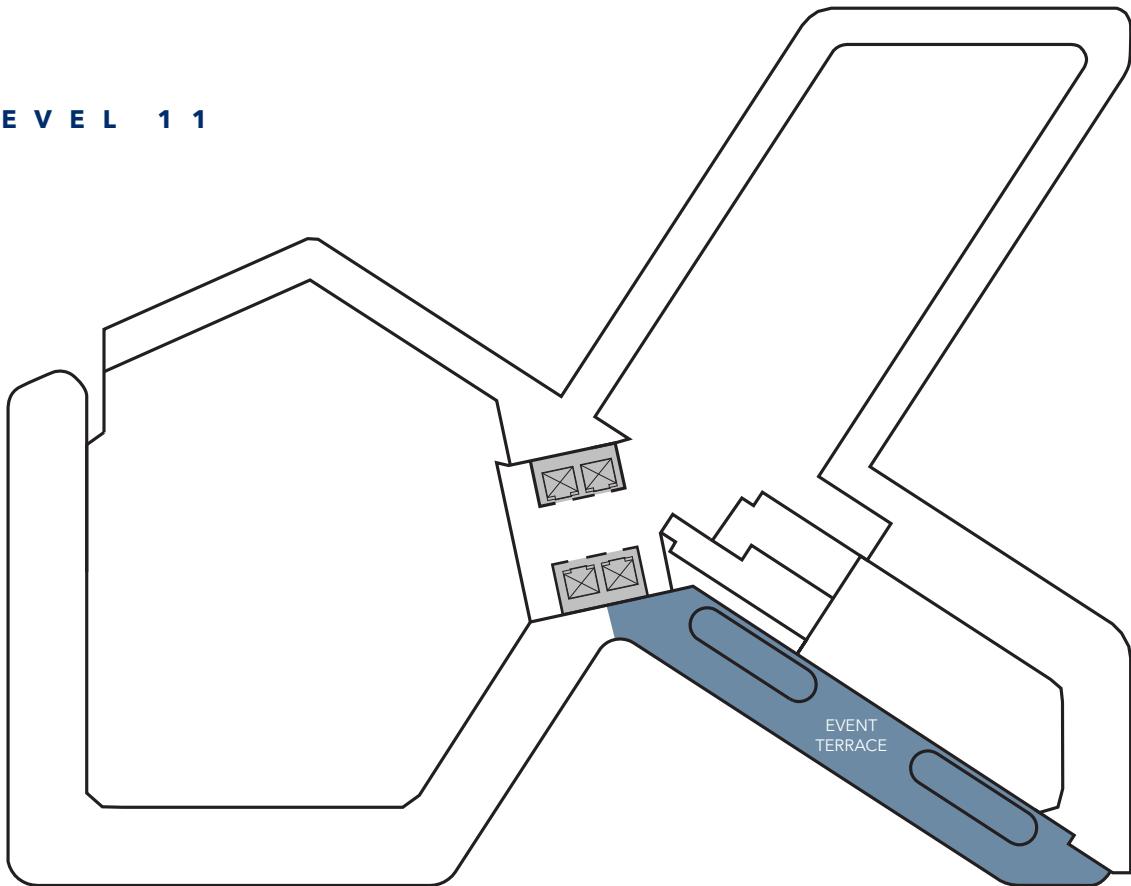
### LEVEL 2



**LEVEL 3**



**LEVEL 11**



**MEETING AND EVENT CAPACITY CHART**

Function Room	Dimensions	Square Feet	Ceiling Height	Classroom	Theater	Rounds (10)	Rounds (7)	Hollow Square	U-Shape	Conference	Reception
<b>LEVEL 2</b>											
<b>Ballrooms</b>											
Grand Ballroom	62' x 123'	7,626	17'	510	850	550	420	160	132	140	720
Grand Ballroom A	31' x 40'	1,240	17'	80	135	100	70	44	36	40	120
Grand Ballroom B	31' x 40'	1,240	17'	80	135	100	70	44	36	40	120
Grand Ballroom C	62' x 42'	2,604	17'	175	280	210	145	80	62	68	250
Grand Ballroom D	62' x 41'	2,542	17'	175	280	210	145	80	62	68	250
Grand Ballroom A/B	62' x 40'	2,480	17'	170	275	200	140	78	60	66	240
Grand Ballroom C/D	62' x 83'	5,146	17'	350	570	420	290	118	94	100	500
Conservatory Ballroom	75' x 44'	3,300	17'	230	360	270	190	92	78	82	320
Conservatory Ballroom A	25' x 44'	1,100	17'	75	150	90	65	42	36	38	105
Conservatory Ballroom B	25' x 44'	1,100	17'	75	150	90	65	42	36	38	105
Conservatory Ballroom C	25' x 44'	1,100	17'	75	150	90	65	42	36	38	105
Conservatory Ballroom A/B	50' x 44'	2,200	17'	150	240	180	125	68	52	54	220
Conservatory Ballroom B/C	50' x 44'	2,200	17'	150	240	180	125	68	52	54	220
<b>The Arts Rooms</b>											
Mosaic	19' x 15'	285	9'	20	30	20	14	12	10	14	30
Motif	15' x 25'	375	9'	26	42	30	21	20	18	18	38
Canvas	15' x 23'	345	9'	24	36	30	21	18	16	16	34
<b>Pre-Function</b>											
The Gallery	N/A	19,000	17'	N/A	N/A	N/A	N/A	N/A	N/A	N/A	1250
<b>LEVEL 3</b>											
Veil Boardroom	21' x 20'	420	12'	N/A	N/A	N/A	N/A	N/A	N/A	10	N/A
Terrace Boardroom	30' x 19'	570	12'	N/A	N/A	N/A	N/A	N/A	N/A	16	N/A
Avenue Suite	21' x 23'	483	10'	N/A	40	30	21	10	7	12	40
<b>LEVEL 11</b>											
Rooftop Event Terrace (Outdoor)	110' x 18'	1,980	N/A	N/A	N/A	N/A	N/A	N/A	N/A	N/A	135



**C O N T A C T   I N F O R M A T I O N**

Tiffany Rioux - Director of Sales  
(O) 202 844 5930 (M) 202 805 9049  
Andy Finn - Director of Sales and Marketing  
(O) 202 844 5900 (M) 281 979 0433

Hotel Address:  
Conrad Washington, DC  
950 New York Avenue  
Washington, D.C. 20001

Pre-Opening Offices:  
Conrad Washington, DC  
1325 G Street, NW  
Suite 500  
Washington, D.C. 20001